

INDUSTRIAL SPACE AVAILABLE

107,618± SF (Divisible to 30,000± SF)

LAKWOOD INDUSTRIAL PARK
1985 RUTGERS UNIVERSITY BOULEVARD, LAKEWOOD, NEW JERSEY

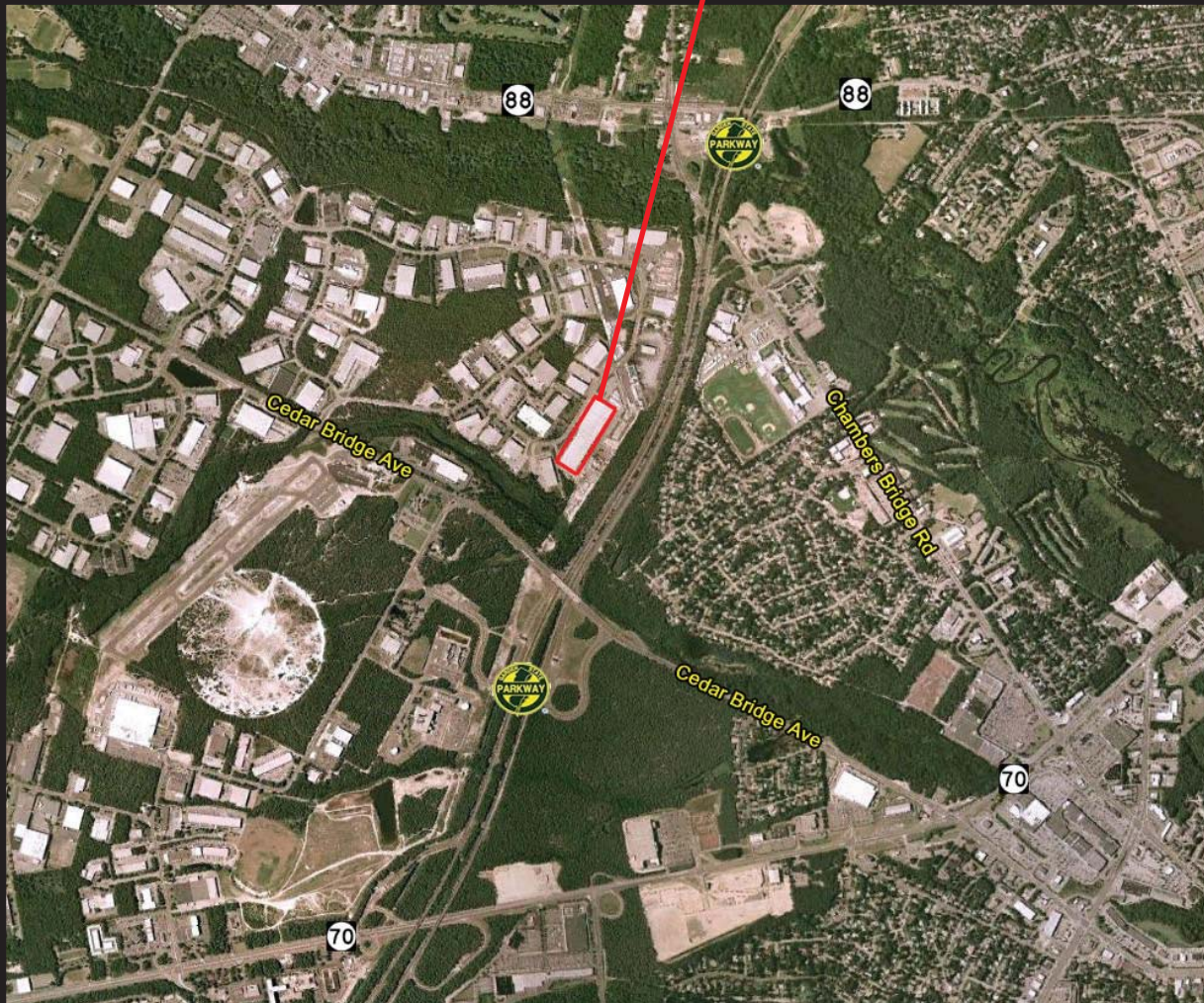
Ceiling Height: 25' clear

Loading: Three (3) drive-in
Eight (8) tailboard
Expandable

Parking: Over 175 cars; 25 trucks
Plus additional outside storage
area for vans/trucks

Electrical: 800 AMP, 480 volt, 3-phase

Office Area: Approximately 7,000 SF



For Additional Information, Please Contact Exclusive Agents:

Douglas A. Gaffney
dgaffney@schultznet.com
The Schultz Organization
973-216-4196

Vic Iorio
vpioro@gmail.com
V.P. Iorio Realty
732-364-4588